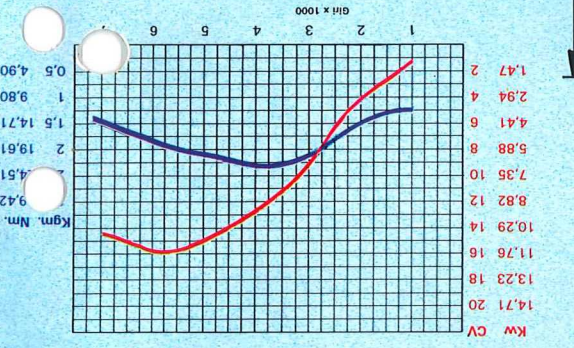
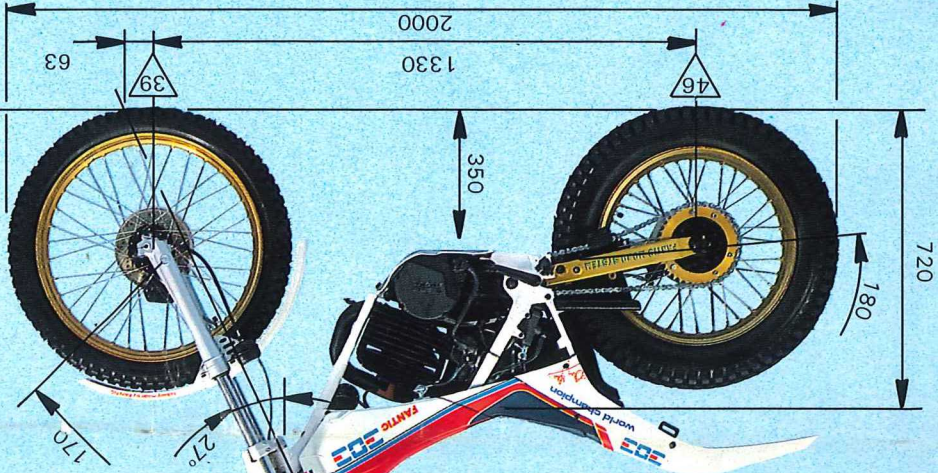
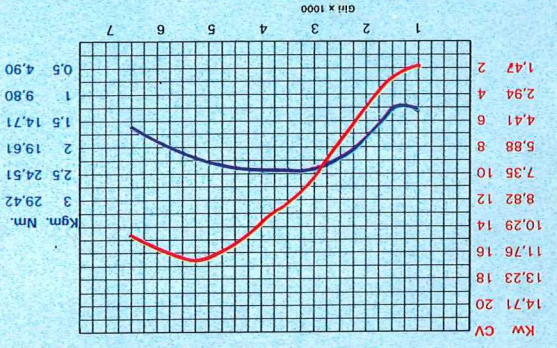


TECHNICAL FEATURES

Engine:	TRIAL 303	TRIAL 243	TRIAL 125
Two stroke, single-cylinder, air cooled. Removal of cylinder and head possible without take away the engine.	74x88 mm	69x56,5 mm	55,2x52 mm
Cylinder size:	249,4 cc.	212 cc.	124,4 cc.
Max. power:	16,6 HP (KW 12,3) a 5.000 R.P.M.	16 HP (KW 11,7) a 5.750 R.P.M.	11,5 HP (KW 8,46) a 5.500 R.P.M.
Max. torque:	2,5 KgM (24,5 Nm) a 4.000 R.P.M.	2,32 KgM (22,7 Nm) a 3.750 R.P.M.	1,41 KgM (13,88 Nm) a 5.000 R.P.M.
Compression ratio:	1:10,4	1:11,7	1:12
Ignition:	DUCATI ENERGIA electronic flywheel and ignition system. The weight of the flywheel is adjustable for individual preference.		
Clutch:	Multi disc in oil bath.		
Transmission:	6 speeds with frontal claw clutch.		
Starting:	Forward-moving kick starter, function with any gear engaged.		
Carburettor:	DELLORTO PHBH 26 SD DELLORTO PHBL 24 BD anodized, elastically mounted.		
Fuel & lubrication:	Gas mixture of 97 N.O. SUPER to 2% oil CASTROL TTS pre-mix. Front: single tube opening to twin tube with open cradle. Rear: double tube sub-frame in special steel, decomposable to two pieces and support struts on motor. Motor base protector in light alloy. Handbars mounted on tapered roller bearings protected by rubber sealing rings. Footrest can be positioned for preferential choice in three positions.		
Suspension:	Front telescopic fork with forward pivot, diameter 35 mm, steel shafts flowing on bushes, light alloy sleeves, 170 mm. stroke. Rear floating forks in Chrome-Molybdenum steel on rectangular section and hydropneumatic mono-shock suspension unit with single regulating control to vary damping of this unit in both contraction and expansion. 56 mm. stroke, wheel travel stroke 180 mm.		
Electric installations:	Flywheel magnets, 12V/51W with regulating tension. 3-light head lamp, tail lamp with brake and license plate lights.		
Rims:	Anodized light-alloy, front WM/1x21", rear WM/2x18".		
Hubs:	Light alloy bearings mounted. Front and rear hydraulically operated disc brake. (Front disc protected by disc cover, with master cylinder in protected area).		
Tires:	TUBELESS front 2.75x21", rear 4.00x18".		
Gas tank:	Shock-resistant thermoplastic resin, 4 lt. capacity including reserve.		
Consumption (CUNA) lt/100 Km.:	4,3 lt.	4 lt.	3,1 lt.
Weight:	99 km/h.	99 km/h.	90 km/h.
Maximum velocity:	99 km/h.	99 km/h.	90 km/h.
Maximum road grade:	No limit.		



FANTIC MOTOR
FABBRICA MOTOCICOLI S.p.A.

VIA PARINI, 3 - BARZAGO (CO) ITALY
TEL. 031/860281-2-3 - TELEX 380448 FANTIC I

CONCESSIONARIO DEALER
IH R FACHHANDLER
CONCESSIONNAIRE

PRINTED IN ITALY - 6/87 - 364.93.00.5270 - L.G.B.

TRIAL 303 Professional



FANTIC MOTOR
World Champion

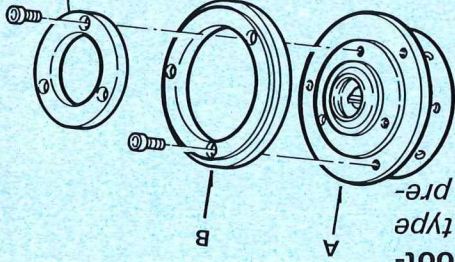
NEW TRIAL GENERATION
totally made by FANTIC

EXCITING EXPERIENCE OF THE TWICE CHAMPION OF THE WORLD

From FANTIC you capture the new TRIAL '87 inventive and outlined highlights with far reaching standards never before achieved in the development of a trials machine, all from the champion of the world, and Fantic, with this machine you can be the highest professional, or just a competitive rider, to enjoy the outstanding capabilities, flexibility and reliability, now produced entirely by Fantic.

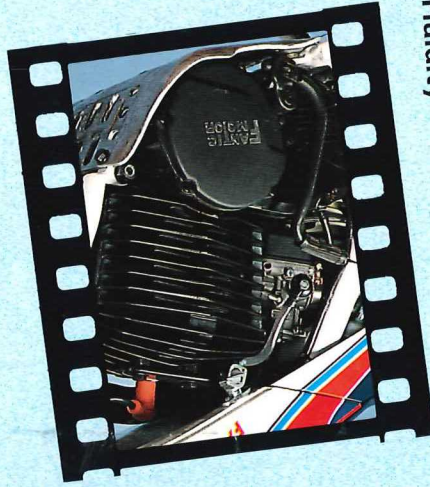
NOT JUST ONE MACHINE - BUT SEVERAL

- Exclusive electronic flywheel, which is adjustable for individual preference and regulating foot-rest platform for rendering adaptability for each type of terrain, which is also adjustable for individual preference.

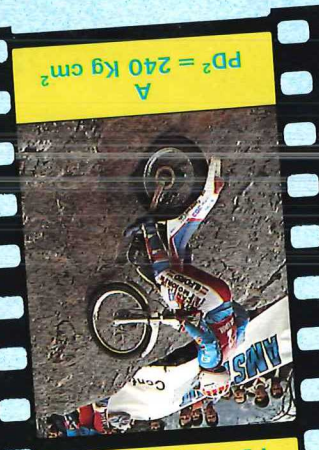
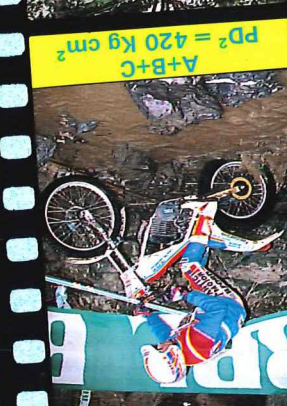
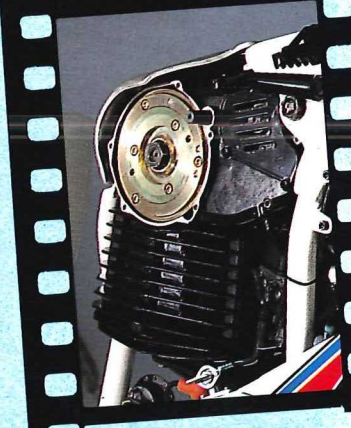


- Powerful motor, reliable with fantastic flexibility in all gears.

- Exclusive DELORTO carburettor to new specification.



Softness



Responsive

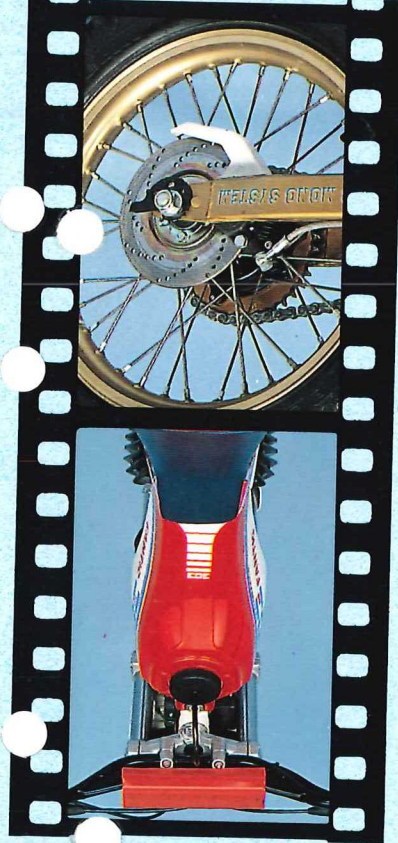
Performance

Fluidity

- Unique Fantic front suspension, totally designed and built by Fantic.
- Front and rear disc brakes.
- TUBELESS tyres.



- Under all conditions of terrain, the weight distribution and centre of balance have been improved to perfection.
- The new monoshock suspension will hold the rear of the machine in perfect line over all types of obstacles, and give the machine more controllability.



TRIAL 243 Professional



TRIAL 125 Professional

